

John H. Armstrong, M.D. Rick Scott
State Surgeon General Governor

Inaugural

In this issue

- Overview **P.1**
- Duval County Statistics **P.2**
- New HIV Cases **P.2**
- New AIDS Case **P.4**
- Data Sources **P.5**



**Get Tested
Know Your Status**

Area 4 Surveillance Staff

Treva Davis, M.S.P.H.
Surveillance Program
Manager/Northern Regional
Consultant
(904) 253-2989

Wideline Julien, M.P.H.
Surveillance Coordinator
(904) 253-2955

Aja Arrindell, M.S., M.P.H.
Surveillance Coordinator
(904) 253-2954

Willie Carson
MMP Coordinator
(904) 253-2990

Miguel Lopez
NIR Coordinator
(904) 253-2988

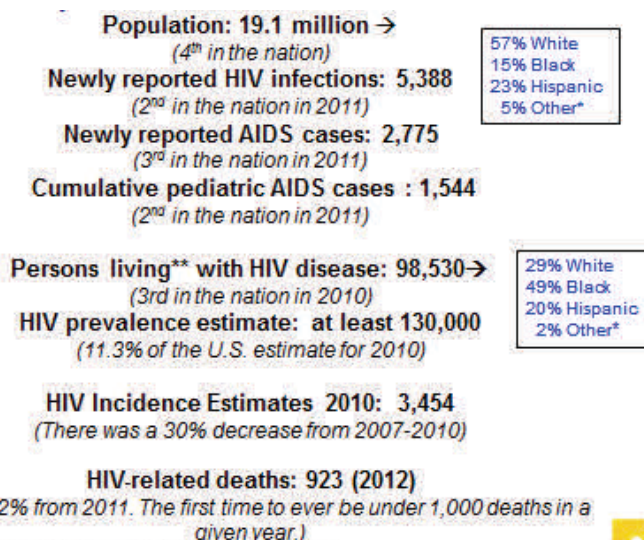
Patricia Jenkins
Data Processing Specialist
(904) 253-2992

For questions regarding HIV/AIDS data or HIV/AIDS reporting please contact the Area 4 HIV Surveillance Program.

**HIV/AIDS in Florida/Duval County
An Overview**

- In 2011, Florida ranked second in the nation for newly reported HIV* cases and third for newly reported AIDS+ cases (fig. 1)ⁱ.
- In 2012, Florida data showed that MSM[‡] was documented as the highest reported risk factor with 58% followed by heterosexual contact with 35% in newly reported cases.
- As of December 31, 2013, there have been 5,830 new HIV cases reported in the State of Florida ⁱⁱ.
- Males accounted for 76% of the newly reported HIV infections in Florida.
- African Americans/Blacks represent 42% of newly reported HIV infections among those reported in Florida.
- Duval County represented 6% of newly reported HIV infections and 6% of newly reported AIDS cases in Florida.
- There are 2,574 living[§] HIV cases in Duval County.
- There are 3,348 living AIDS cases in Duval County.

The Epidemic in Florida, 2012



* HIV- Human Immunodeficiency Virus
 + AIDS- Acquired Immunodeficiency Syndrome
 ‡ MSM-Men who have sex with Men
 § Living HIV or AIDS case- A case of HIV or AIDS diagnosed while living in Duval County, reported based on criteria of a positive confirmatory test and presumed alive at this specific point in time.

*Other = Asian/Pacific Islanders; American Indians/Alaskan Natives; multi-racial. Trend data as of 12/31/2012. ** Living data as of 06/30/2013

Figure 1



Duval County Statistics:

The incidence rate** of newly reported HIV/AIDS cases in Duval County continues to remain steady which in turn shows awareness, increased involvement among community planning, prevention methods, reduced barriers to HIV testing, the reduction of stigma and the dissemination of health information and measures (i.e. condoms).

This report reflects cases reported as of December 31, 2013, unless otherwise noted. All data is considered preliminary and will not be final until July 2014. Data presented is displayed by Birth Sex, Race and Mode of Transmission. HIV cases cannot be added with AIDS cases because the categories are not mutually exclusive. This newsletter is published four times a year.

New HIV Cases:

In 2011, Duval County ranked fifth in Florida having reported 324 new HIV cases. In 2012, Duval County ranked fourth which represented a 2% increase in new HIV cases from the previous year (2011). Currently**, Duval County ranks sixth in the state for newly reported HIV cases which is a 3% increase from the previous year (2012) (Figure 2). Though the incidence rate has increased slightly and the prevalence rate** still remains stable, there is still a disproportionate burden among minority populations (i.e. MSM/bi-sexual males and women of color). Data reported disclosed that, African Americans/ Blacks represented 66% of newly reported cases in Duval County and MSM was reported as a risk factor for almost half of the newly reported cases.

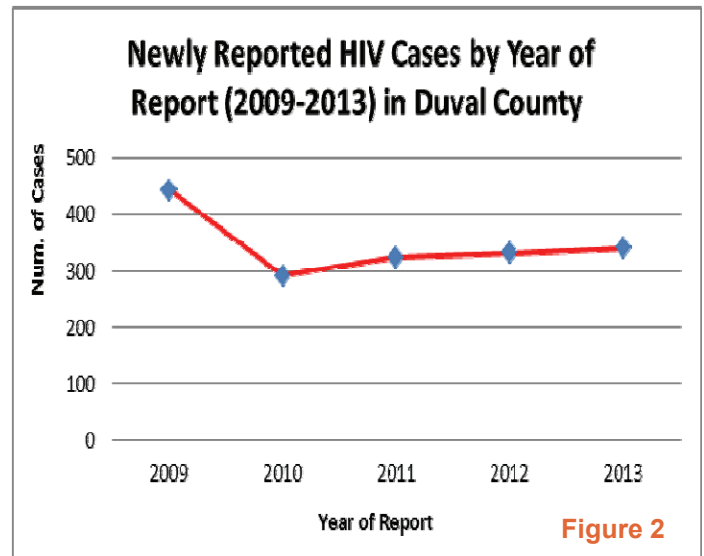
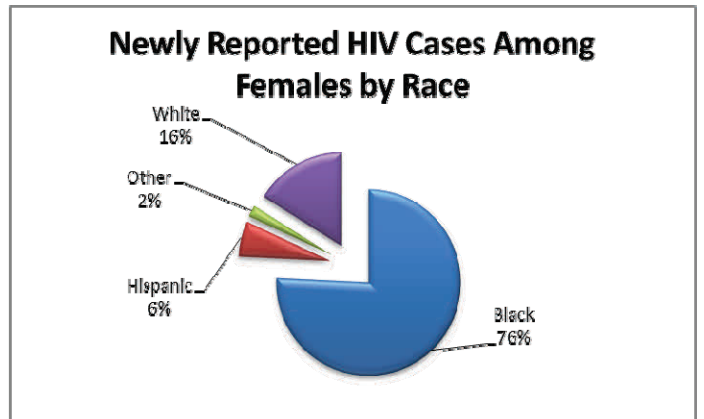


Figure 2

Figure 2.1- African Americans/ Black females accounted for 76% of new HIV cases followed by Caucasian / White females with 16% among women reported in Duval County.



** Incidence rate- The number of newly infected cases during a specific period of time.

**Data reported as of December 31, 2013

**Prevalence rate- the total number of people currently living with the disease at a specific point in time .

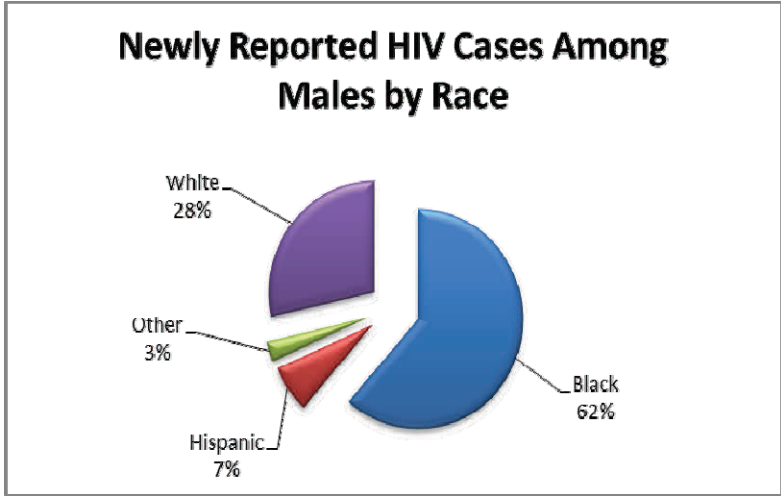


Figure 2.2- African Americans/ Black males accounted for 62% of new HIV cases followed by Caucasian / White males with 28% among men reported in Duval County.

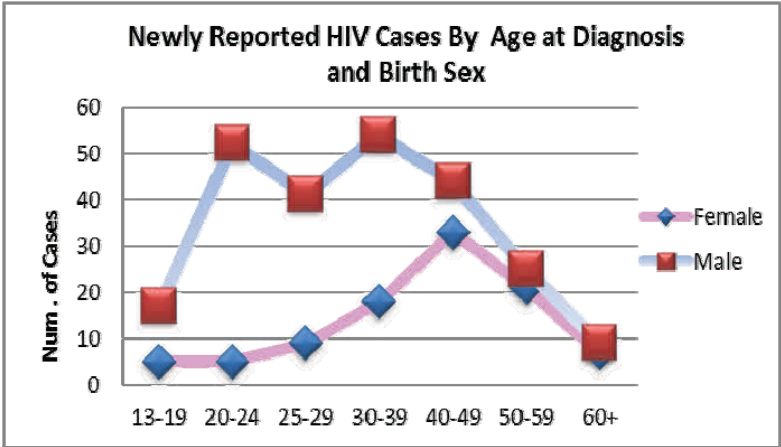


Figure 2.3- In regards to age groups, males between the ages of 30-39 represented the highest number of newly reported HIV cases, with 16%. Respectively, females between the ages of 40-49, represented the highest number of newly reported HIV cases with 9%.

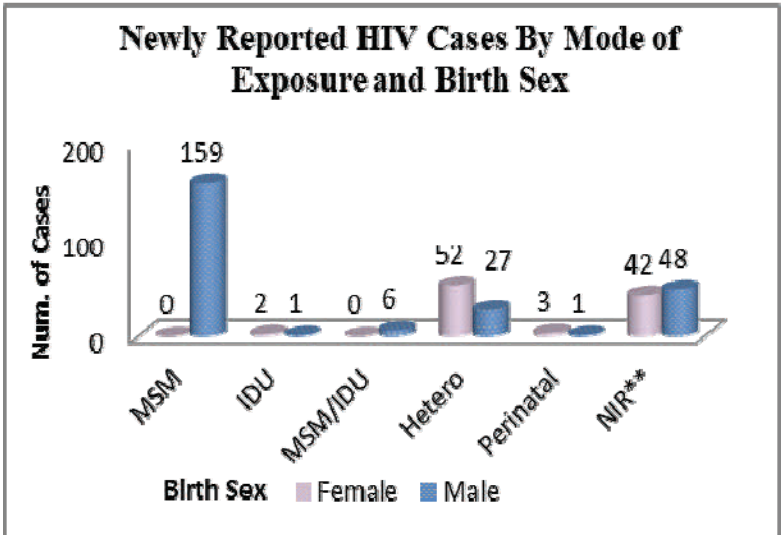


Figure 2.4- Among the newly reported HIV cases, MSM was documented as the highest reported risk factor among males at 47%. In turn, heterosexual contact accounted for the highest risk factor reported among females with 23%.

** -a case identified has having no identified risk

New AIDS Cases:

In 2011, Duval County reported 202 new AIDS cases^{SS} and 204 in 2012, representing a 1% increase and a change of rank from fifth in 2011 to third in 2012. In 2013, data showed that 199 cases were reported which resulted in a 4% decrease from the previous year (fig. 2), which resulted in Duval being ranked sixth in Florida. While the number of newly reported AIDS cases has remained steady, there is still an unequal burden among minority populations (Figure 3) (i.e. MSM/bi-sexual males and women of color). Duval County represented 6% of newly reported AIDS cases in Florida and males accounted for 66% of those new AIDS cases. Furthermore, African American/ Blacks accounted for 75% of the newly reported AIDS cases. Particular to gender and age, Males and females between the ages of 40-49 represented the highest number of newly reported AIDS cases in Duval County as of December 31, 2013

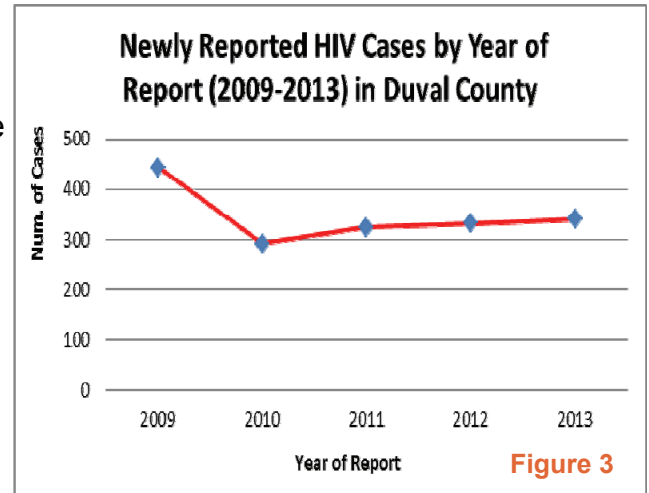


Figure 3

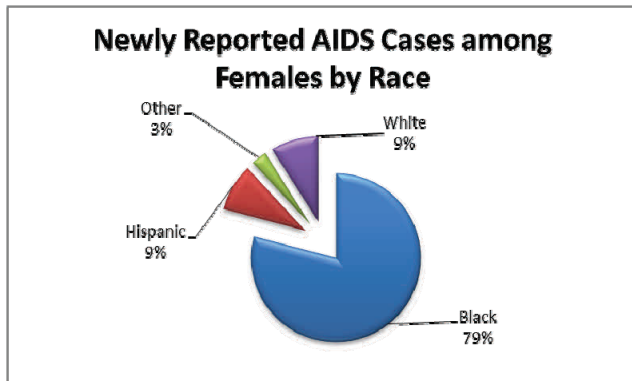


Figure 3.1- Although the incidence rate among new female cases continues to decline. Women of color, particularly African American women continue to be disproportionately affected. In 2013, African American/ Black females accounted for 79% of new AIDS cases followed by Caucasian/ white females with 9% among women in Duval County.

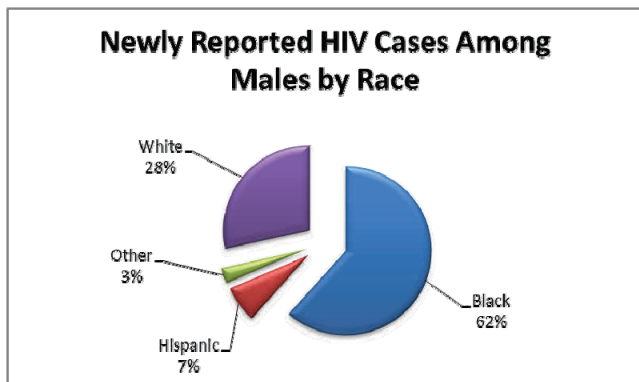
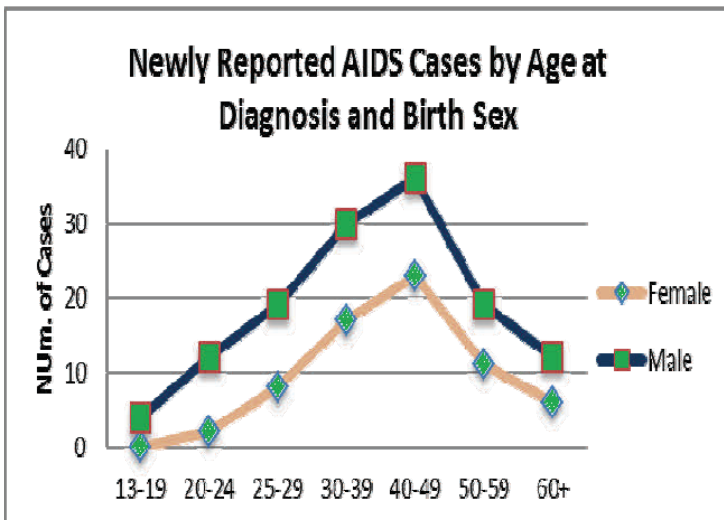


Figure 3.2- Reported data among men showed an increase in cases, especially among African American and Hispanic males. Although both represent less than 30% of the total adult population in Duval County, they account for more than half of the reported new AIDS cases. In 2013, African Americans/ Black males accounted for 62 % of new AIDS cases followed by Caucasian / White males with 30% among males in Duval County.

^{SS}AIDS case diagnosis- CD4+ T-lymphocyte count of <200 cells/ μ L or percentage of <14% among persons ages \geq 13. Children <13, must have HIV infections and at least one-AIDS defining condition. Data displayed excludes pediatric cases; All cases are 13+.

Figure 3.3- In regards to age groups, males between the ages of 40-49 represented the highest number of newly reported AIDS cases, with 30%, as well as, females representing the same age group (40-49) with 12%. In turn, males between the ages of 30-39 represented 16% of these cases and females between the ages of 30-39 represented 8%.



Florida Law (s.384.25, F.S) requires cases of AIDS to be reported by anyone who diagnosis or treats a person with AIDS. A person who tests positive for Human Immunodeficiency Virus (HIV) on or after July 1, 1997 is also reportable.

Confidentiality is strictly enforced & guaranteed. Please comply with all information security and mailing protocols.

ⁱGeographical distribution for Newly Reported HIV/AIDS cases will not be published until March 2013 no later than April 2013.

ⁱⁱData excludes Department of Corrections (DOC) and Federal Correctional Institute (FCI) cases.

Data Sources

CDC. HIV Surveillance Report, 2011; vol. 23. <http://www.cdc.gov/hiv/topics/surveillance/resources/reports/>. Published February 2013. U.S data: HIV Surveillance Report, 2012

CDC. HIV Surveillance Report, Vol. 23; February 2013. HIV diagnosis data are estimates from all 50 states, the District of Columbia, and 6 U.S. dependent areas. Rates do not include U.S. dependent areas.

CDC. National Center for HIV/AIDS, Viral Hepatitis, STD, and TB Prevention Atlas. Data are estimates from all 50 states, the District of Columbia, and 5 U.S. dependent areas.

Florida data: FL Department of Health, Bureau of Communicable Disease, HIV/AIDS and Hepatitis Section

Hall HI et al. "Estimation of HIV Incidence in United States." JAMA, Vol. 300, No.5; August 2008



CURRENT EVENTS

National Church Week of Prayer March 2-9, 2014

National Women and Girls HIV/AIDS Awareness Day March 10, 2014

National Youth HIV & AIDS Awareness Day April 10, 2014

*For more information regarding these events please contact Torrencia Shiloh, Area 4 Minority AIDS Coordinator (904) 253-2984 or Rod Brown, Prevention & Training Consultant (904) 253-2899.



Area 4 HIV/AIDS Surveillance Program
Florida Department of Health in Duval County
 5917 105th St.
 Jacksonville, FL 32244